



## **THE PROJECT FOR UPGRADING QUALITY OF HEALTH SERVICE OF SIEM REAP PROVINCIAL HOSPITAL OF MINISTRY OF HEALTH**

---

### **PROJECT DESCRIPTION**

---

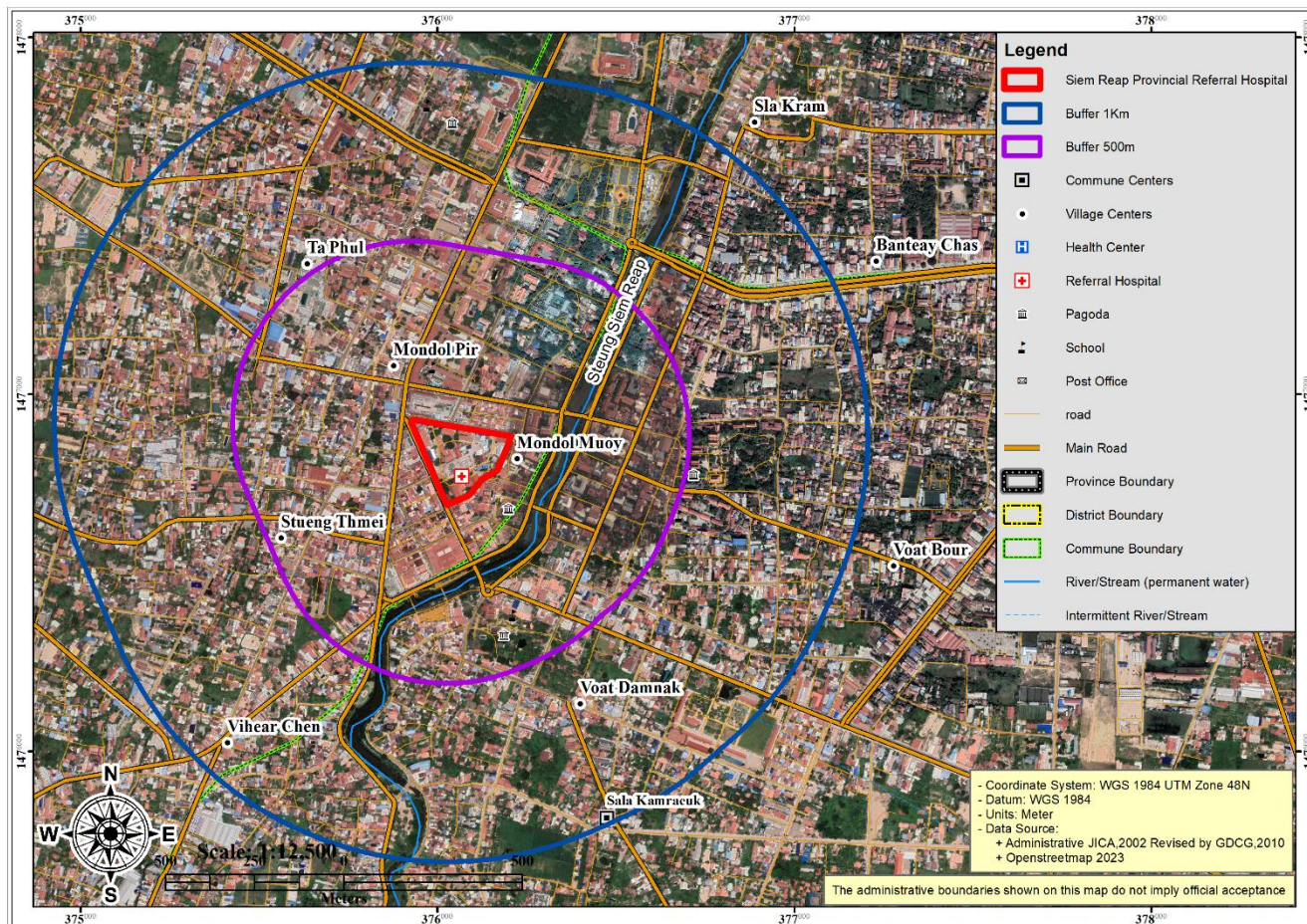
#### **1. Introduction**

1. The Ministry of Health (hereinafter MoH) has high responsible implementing on integration approach of health service provision include prevention service, health education, diagnosis, treatment and maintain and rehabilitation via providing quality, safety and efficiency service. Health service system basically focused on service provision or public health intervention which relating on resident health and impact of society on health as well. Those service provisions are aimed to reduce disease and death of mother, baby and children, and reduce the infectious and non-infectious diseases and public health issue. MoH has planned on Upgrading Quality of Health Service of Siem Reap Provincial Hospital in the purpose of serving a better health care service for general population in the region.

2. Siem Reap Provincial Referral Hospital is the main hospital in northern Cambodia. Patients come to the hospital from within Siem Reap Province, as well as from surrounding provinces. However, due to the deterioration of facilities built in the 1970s and lack of equipment, Siem Reap Provincial Referral Hospital is not currently meeting the health care needs of the provinces. The Ministry of Health, with funding from the Japan International Cooperation Agency (JICA), will renovate and construct new buildings in the hospital to serve and improve the quality of health services to local people. The project of Improvement of Referral Hospital in Siem Reap Provinces, intends to improve the provincial hospital to strengthen the health system, moving toward the achievement of universal health coverage (UHC).

#### **2. Project Site**

3. The proposed project for Upgrading Quality of Health Service of Siem Reap Provincial Hospital of Ministry of Health (MoH) is located at Mondol 1 village, Svay Dankum commune, Siem Reap city, Siem Reap province which project land size is approximately 39,357 m<sup>2</sup>. Siem Reap Provincial Hospital is bordered on the north by Central Market St, on the west by Sivatha Ave and 2 Thnou Street, to the south is 2 Thnou Street and 8<sup>th</sup> Street, and to the east is Pub Street and People's housing. The following map shows the location of the project area:



Map: Project Site

### 3. Facilities of the Project

4. Currently, the Siem Reap Provincial Hospital is under construction of emergency surgery block. The surgical ward, internal medicine, otolaryngology, and dentistry remain in the existing facilities which are craped and consist of old buildings, and need to be improved to enhance the hospital's functioning. The proposed project scope is to construct an advanced medical services block and general medical services block.







- Providing communities in the project area with information about the project regarding its overall objectives and goals;
- Present information regarding the locations of the facility;
- Present anticipated environmental and social impacts of the project and proposed mitigation measures;
- Discuss potentially affected persons;
- Opinion survey on the project;
- Gather concerns and suggestions from the stakeholders on environmental and social issues related to the construction and implementation of the project.

6. Therefore, the SG team is honored to inform the local authorities as well as local people to be informed of the 1<sup>st</sup> Public Consultation Meeting on the Project Upgrading Quality of Health Service of Siem Reap Provincial Hospital.